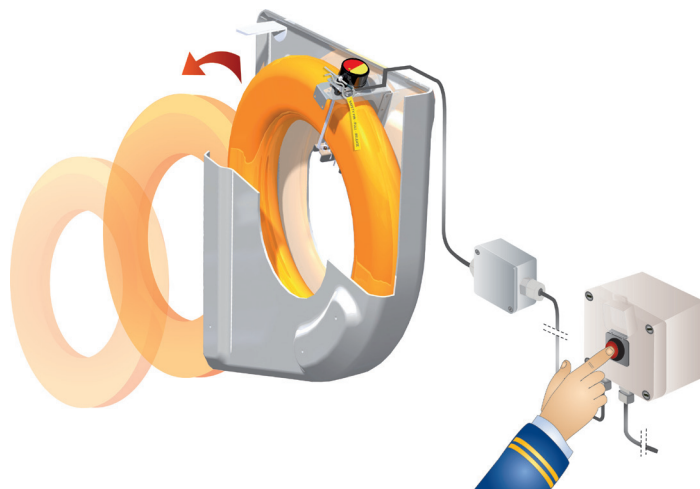


HAMMAR LIFEBOUY RELEASE SYSTEM INSTALLATION MANUAL



Specification:

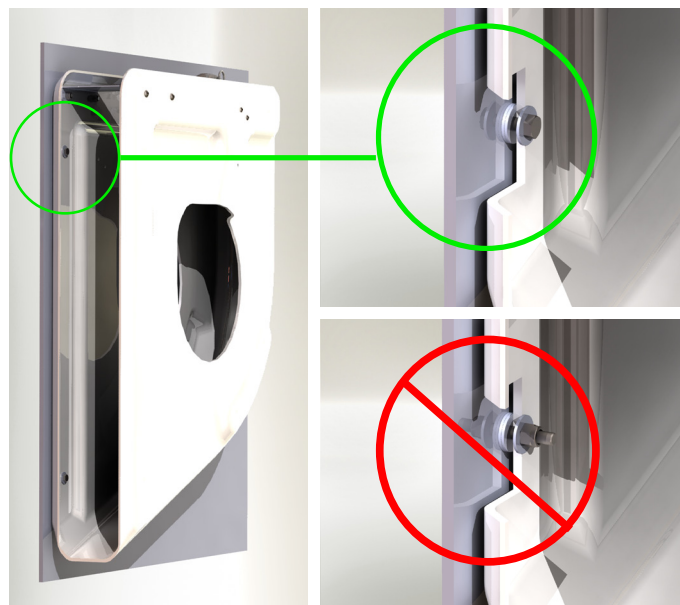
- One GRP holder with pre-installed metal holder and bracket.
- One ERU (electric remote unit) with cord pre-installed on metal holder.
- One Release Switch
- One Connector box
- 20m cable from connector box to release switch, screened 2 x 0,75mm², diameter 8mm
- One manual safety pin
- One pilot line for loading the lifebuoy
- One installation manual
- One User Guide
- One marking instruction

Not supplied in the kit from CM Hammar:

- Lifebuoy
- Mounting bolts for the installation onboard

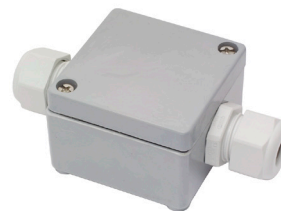
Installation:

1. Mount the GRP holder in a position so that a released lifebuoy will easily fall into the water.
2. Follow the instructions for the mounting bolts in accordance with the pictures. Make sure that you mount double washers between frame or bulkhead and the GRP holder.



2011-03

3. Mount the connector box close to the GRP holder. Make sure that the cable from the ERU is long enough to reach the connector box.



4. Install the screened cable from the connector box to the Release Switch and connect the black ERU cable to the connector box.



5. Mount the Release Switch in an easy to locate and manage position on the bridge. The Release Switch shall always be mounted inside the wheelhouse or bridge.

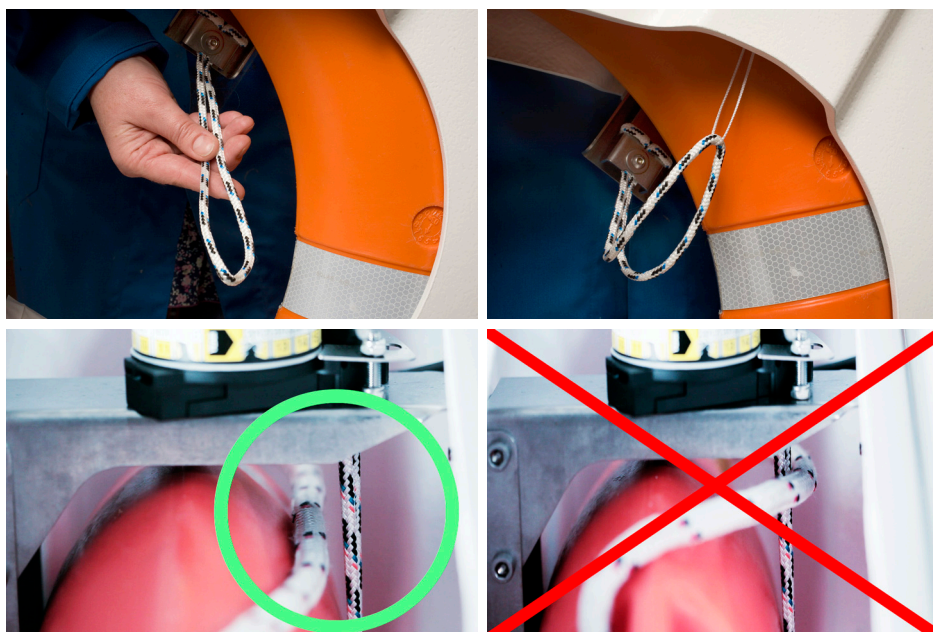


6. Connect 24V emergency power supply to the Release Switch. Ensure that you follow the enclosed connection drawing. Test the electrical installation according to instructions on the drawing.

7. The ERU is pre-installed. The ERU must be marked with its expiry date 2 years from installation onboard. Follow the enclosed marking instruction. An ERU, which is not properly marked with its date of expiry, is not approved.



8. Put a lifebuoy 2/3 rds into the GRP holder and then secure it for the installation phase. Use the supplied thin white pilot line to pull the release cord through the ERU unit. Make sure that the lifebuoy line is not on the outward side of the release cord! This might entangle the lifebuoy in an activation situation.



9. Pull up the release cord through the ERU hole with the pilot line. Secure it with the manual safety pin.

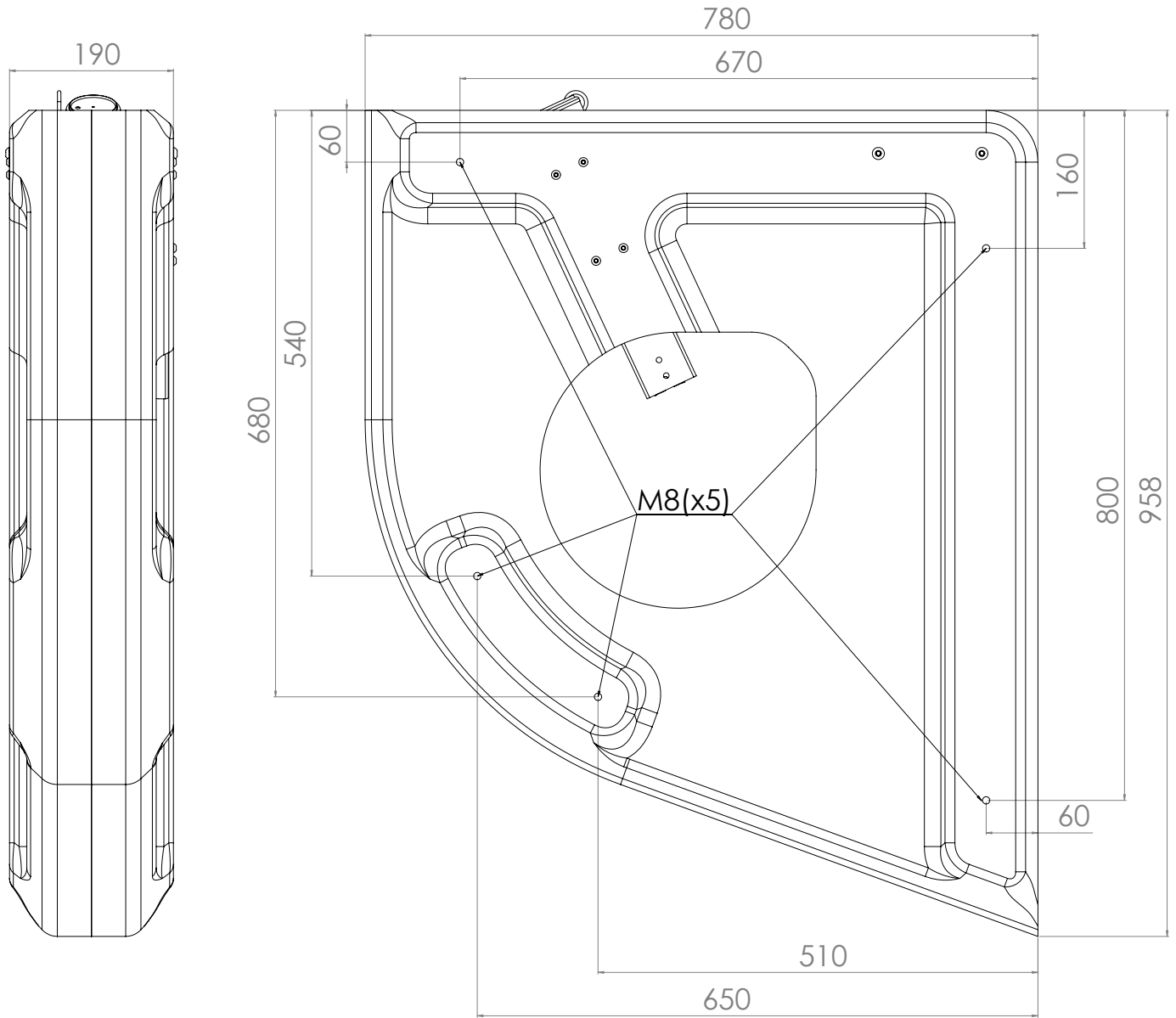


10. Connect the power to the Release Switch.

11. The safety cover on the Release Switch can be secured with some kind of easy-to-break seal, in order to avoid unintentional use of the system.

12. The system is now ready for use. The ERU shall be changed after two years of service.

GRP HOLDER DRAWING



Sideview



Backview



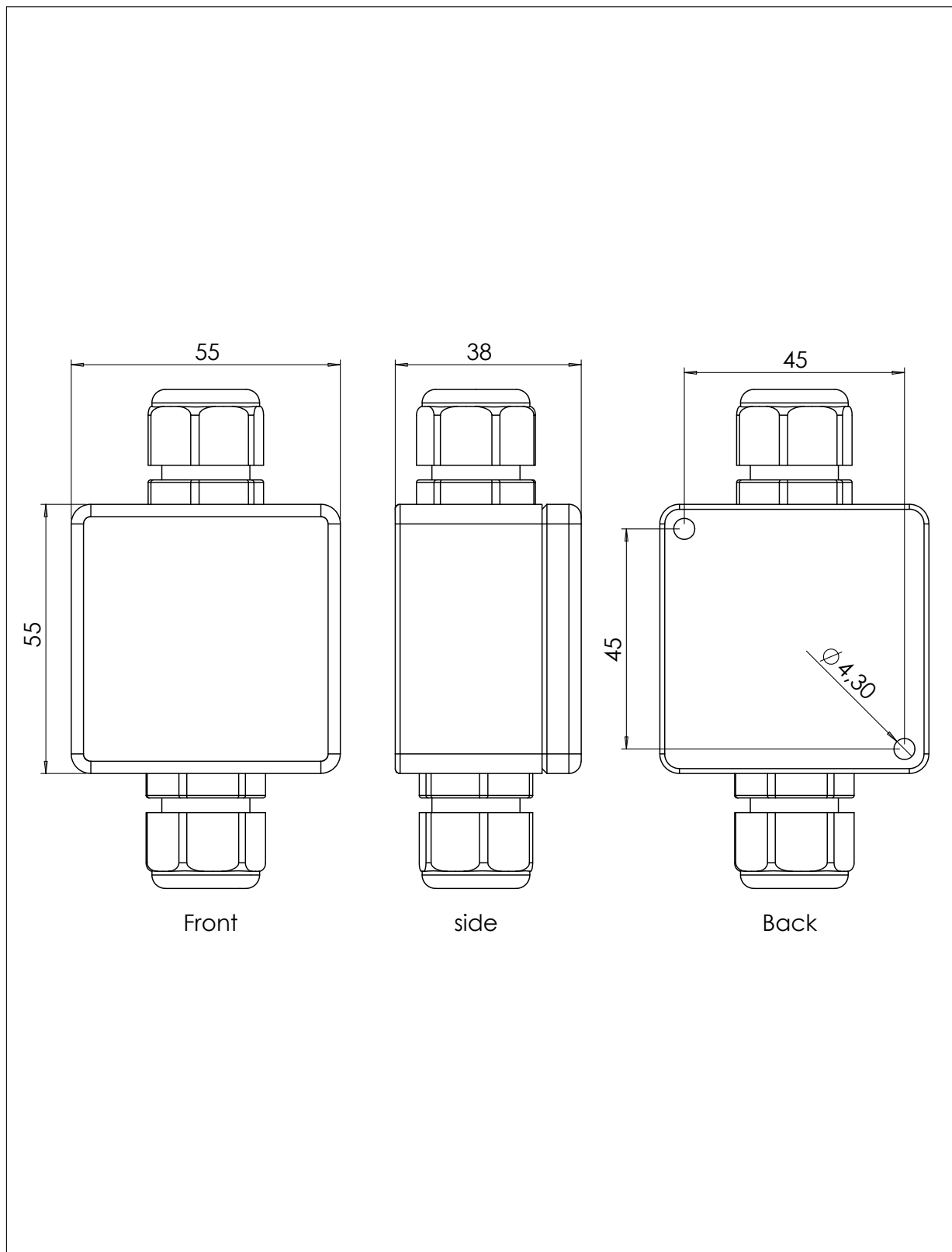
Frontview



Topview

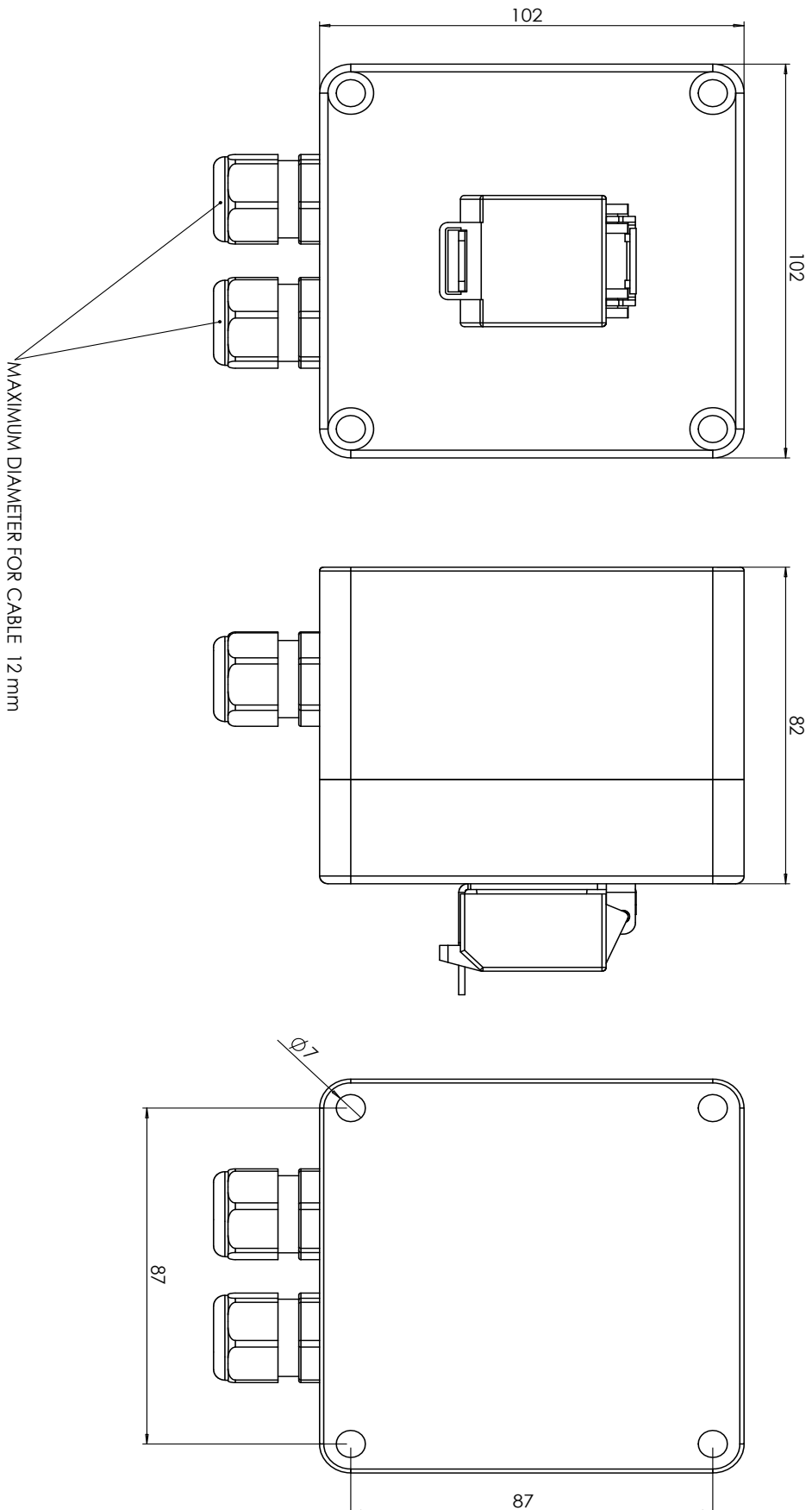


CONNECTOR BOX DRAWING



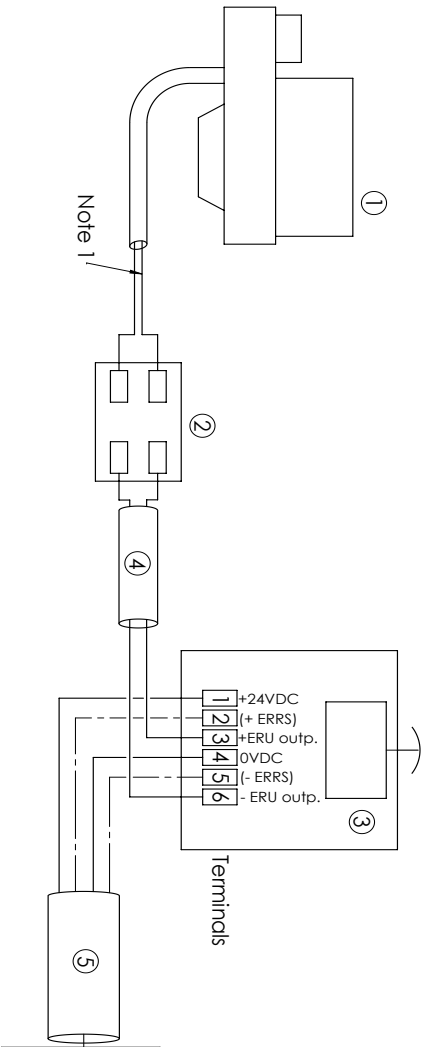
Def.	Number/ant.	Designation/benäm.		Material	Notes/noteringar
tor.c	tor.c	tor.c	1:1		10-07-2009
Drawn/Ritad	Checked/Kontr.	Appr./Godkänd	Scale/skala	Repl./Ersätter:	Date/Datum: (dd-mm-yyyy)
CM HAMMAR AB Tel.: +46 31 709 65 50 Fax.: +46 31 49 70 23		CONNECTOR BOX ERU			Draw.No./Ritn.nr. A010007-01
Sheet 1 of 1					Rev.: 1

RELEASE SWITCH DRAWING



Del.	Number/cont.	Designation/beskrivn.	Material	Notera/observera
TOT.C	TOT.C	TOT.C		10-07-2009
Drawn/ritad	Checked/kontf.	Appr./godkänd	Scale/skala	Date/Datum
				Drawn/No./ritad
CM HAMMAR AB		RELEASE SWITCH - DIMENSIONS		A010031
Tel.: +46 31 709 65 50 Fax: +46 31 49 70 23		Sheet 1 of 1	Rev.: 1	

WIRING CONNECTION DIAGRAM ERU



Optional connection to ERRS System, Terminal No:

- 2 to + output ERRS System (upper terminals 1-10 in ERRS control box)
- 5 to - output ERRS system (Lower terminals 1-10 in ERRS control box)

POWER SUPPLY, Terminal No:

- 1 to +24VDC EMERGENCY POWER SYSTEM
- 4 to 0VDC EMERGENCY POWER SYSTEM

- POS 1: HAMMAR ELECTRIC RELEASE UNIT (ERU), operating voltage 10 - 15VDC, 3A
- POS 2: HAMMAR ERU CONNECTION BOX
- POS 3: HAMMAR ERU RELEASE SWITCH 24VDC
Input voltage 18VDC - 32VDC
Max. intermittent load 3A
- POS 4: Cable, 2 x 0,75 mm² (screened). Outer diameter 5-10 mm.
- POS 5: Cable, 4 x 0,75 mm² (screened). Outer diameter 5-12 mm
of
Cable, 2 x 0,75 mm² (screened). Outer diameter 5-12 mm.

Note 1: When connecting the cable from the H20-ERU to the CONNECTION BOX, the polarity of the wires is of no importance.

TESTING THE INSTALLATION:
The correct function of the HAMMAR ERU RELEASE SWITCH can be tested by connecting a 200 mA 5x20 mm glass tube fuse to the ERU RELEASE SWITCH output instead of the pos. 1 ERU unit. The fuse blows off when the ERU RELEASE SWITCH push button is pressed if the system is correctly installed.

Del:	Number/art:	Designation/benämning:	Material:	Höjds/höjterger:
TC	TC	TC		03-10-2007
Drawn/ritad:	Checked/kontroll:	Appr./Godkänd:	Scale/skala:	Revis./Reviderat:
CM HAMMAR AB		HAMMAR H20 ERU - RELEASE SWITCH 24VDC - CONNECTION DIAGRAM		Drawn/No./Ritad: ERU1001
Tel: +46 31 709 45 50 Fax: +46 31 49 20 23		Sheet 1 of 1		Rev.: 5